



Food safety excellence

SOLUS E. coli O157™

keydiagnostics

T: 02 8212 4074 F: 02 9423 6992
info@keydiagnostics.com.au
www.keydiagnostics.com.au
PO Box 1038, Gymea, NSW, 2227

SOLUS E. coli O157™

Solus E. coli O157™ offers food testing laboratories an easy to use, cost effective and efficient method for the detection of E. coli O157™ in food and environmental samples.

Presented in an immunoassay format, Solus E. coli O157™ is versatile and can be used manually or in conjunction with automation.

Laboratories with higher sample throughput are recommended to use the Solus automated method to improve laboratory workflow, significantly reducing technician time and increasing the capacity for testing.

Solus E. coli O157™ Benefits

Rapid

- Results can be available in 18 hours
- 2 hours to presumptive negative/positive results post selective enrichment

Cost Effective

- Increased laboratory efficiency
- Reduced demand on resources
- Reduced waste (environmentally friendly)

Efficient

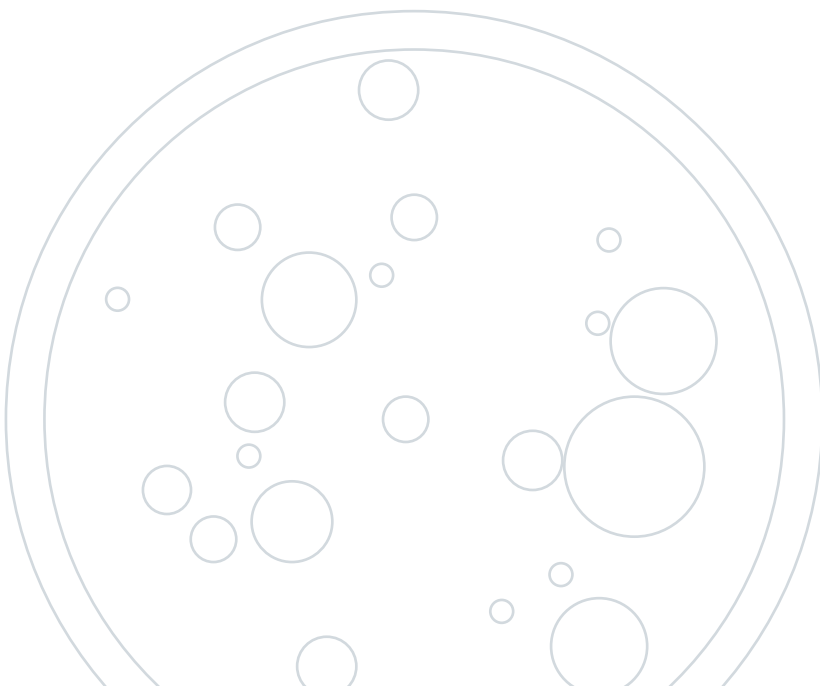
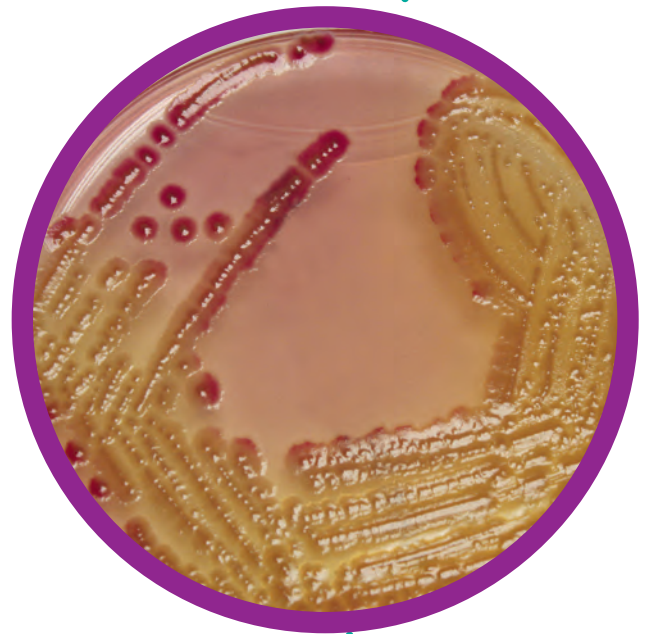
- Highly efficient when automated
- Significantly reduced technician time

Versatile

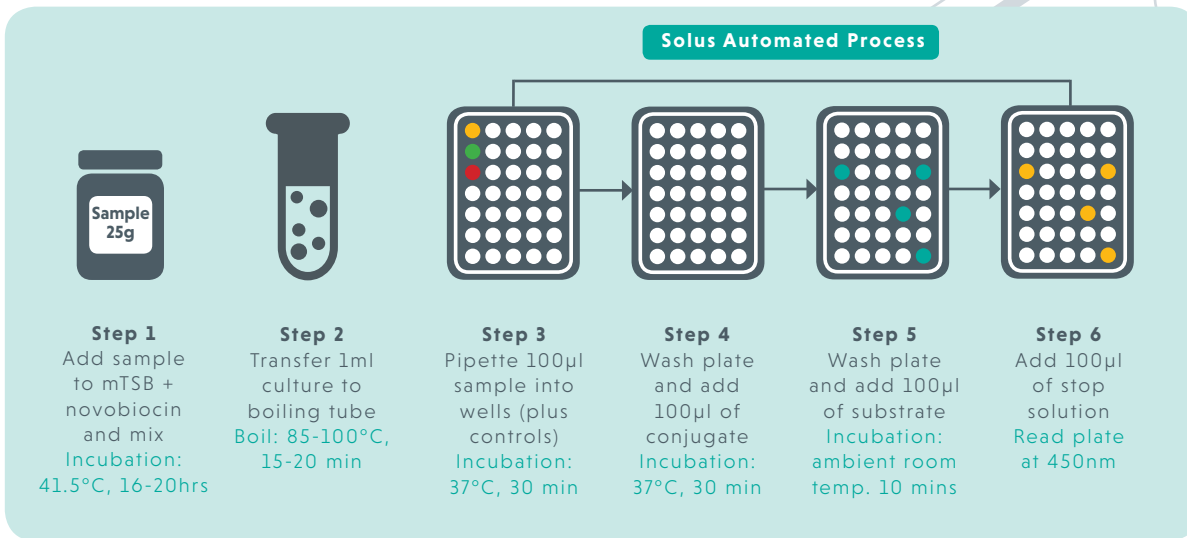
- Easily automated and can be used manually

Reliable

- Robust, reliable and sensitive



Test Methodology



Solus Scientific kits are manufactured in our own production facility to the highest standards which are tightly controlled within our ISO 9001 accredited quality system.

ORDERING INFORMATION

| Product Code | Product Description | Pack Size |
|-----------------------|---------------------|-----------|
| EC-048S | Solus E. coli O157™ | 96 wells |
| MED 026-0.50kg | mTSB | 500g |
| DS2000 | DS2 Automation | 1 |

Call Solus Scientific on: **+44 (0)1623 429 701** for more information or visit: **www.solusscientific.com**

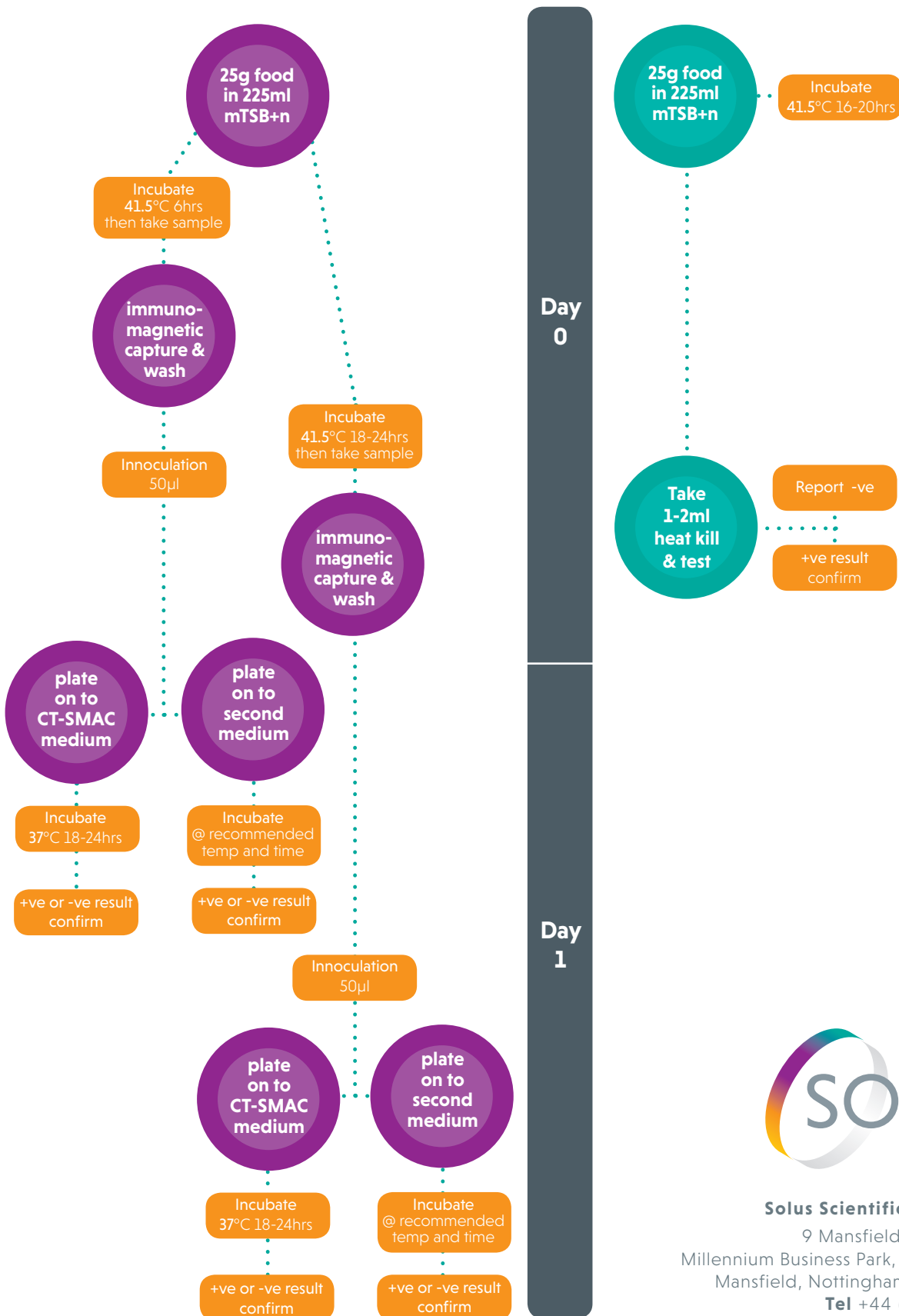


Certificate Number 11117
ISO 9001

Method Comparison Chart Compared with ISO 16654

ISO 16654 Timescale

Solus E. coli O157™ Timescale



Solus Scientific Solutions Ltd

9 Mansfield Networkcentre
Millennium Business Park, Concorde Way,
Mansfield, Nottinghamshire NG19 7JZ

Tel +44 (0)1623 429701

Fax +44 (0)1623 620977

Email enquiries@solusscientific.com

Web www.solusscientific.com