



Food safety excellence

SOLUS SALMONELLA™

keydiagnostics

T: 02 8212 4074 F: 02 9423 6992
info@keydiagnostics.com.au
www.keydiagnostics.com.au
PO Box 1038, Gymea, NSW, 2227

SOLUS SALMONELLA™

Solus Salmonella™ offers food testing laboratories an easy to use, cost effective and efficient method for the detection of Salmonella in food and environmental samples.

Presented in an immunoassay format, Solus Salmonella™ is versatile and can be used manually or in conjunction with automation. Performing to high standards, Solus Salmonella™ is robust, reliable and validated by AFNOR to ISO 16140.

Laboratories with higher sample throughput are recommended to use the Solus automated method to improve laboratory workflow, reduce technician time and increase the capacity for testing.

Solus Salmonella™ Benefits

Rapid

- Results can be available in 36 hours
- 2 hours to presumptive negative/positive results post selective enrichment

Cost Effective

- Increased laboratory efficiency
- Reduced demand on resources
- Reduced waste (environmentally friendly)

Efficient

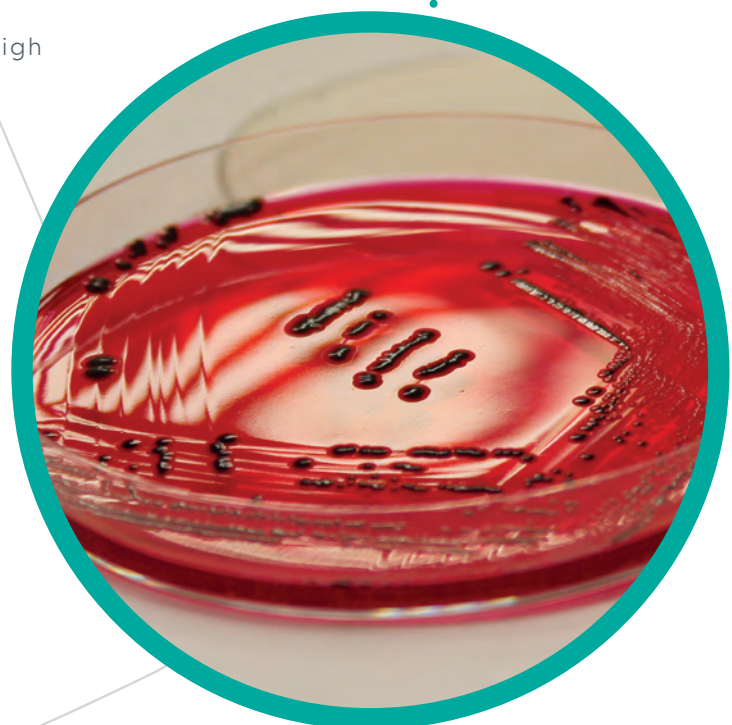
- Highly efficient when automated
- Significantly reduced technician time

Versatile

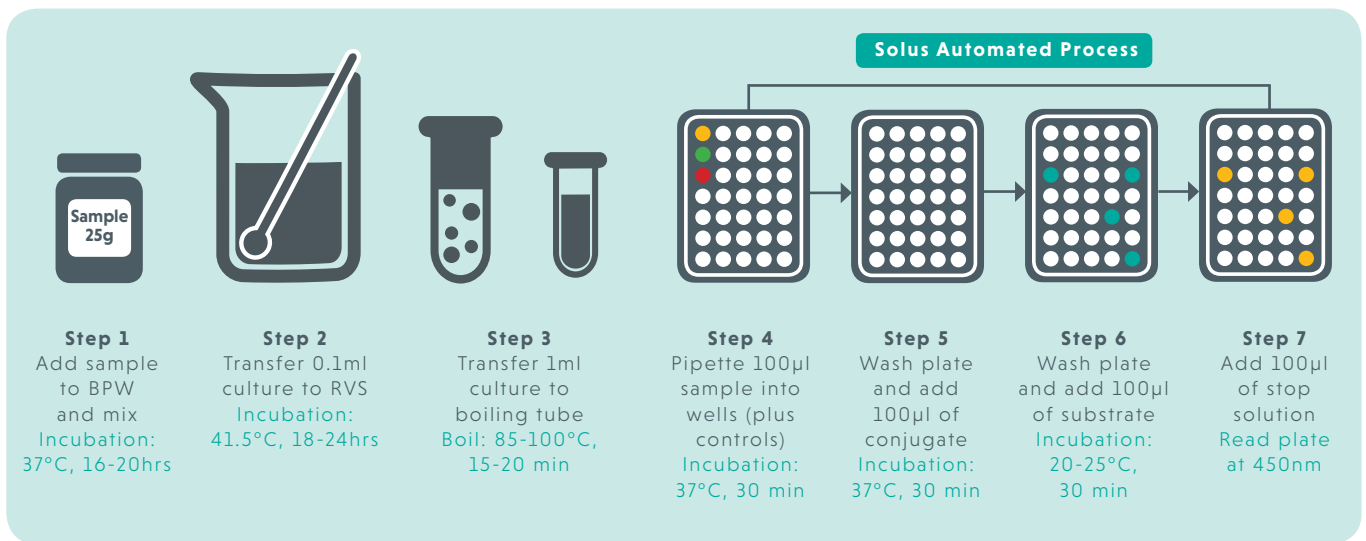
- Available in 96 or 480 well formats

Reliable

- Independent validation demonstrates high levels of sensitivity and specificity



Test Methodology



Solus Scientific kits are manufactured in our own production facility to the highest standards which are tightly controlled within our ISO 9001 accredited quality system.

ORDERING INFORMATION

Product Code	Product Description	Pack Size
SAL-0096S	Solus Salmonella™ ELISA	96 wells
SAL-0480S	Solus Salmonella™ ELISA	480 wells
RVS001	Solus RVS Powder	500g
MED017-10kg	Buffered Peptone Water	10kg
DS2000	DS2 Automation	1



Solus Salmonella™ is validated to ISO 16140 and approved for use by AFNOR. Certificate number: SOL 37/01 – 06/13.

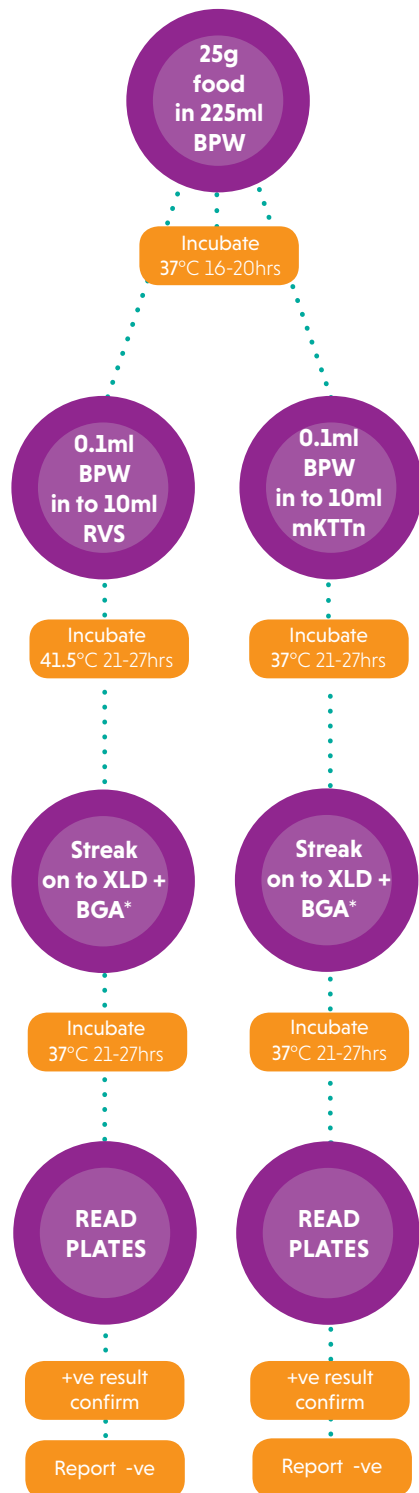
Call Solus Scientific on: **+44 (0)1623 429 701**
for more information or visit: www.solusscientific.com



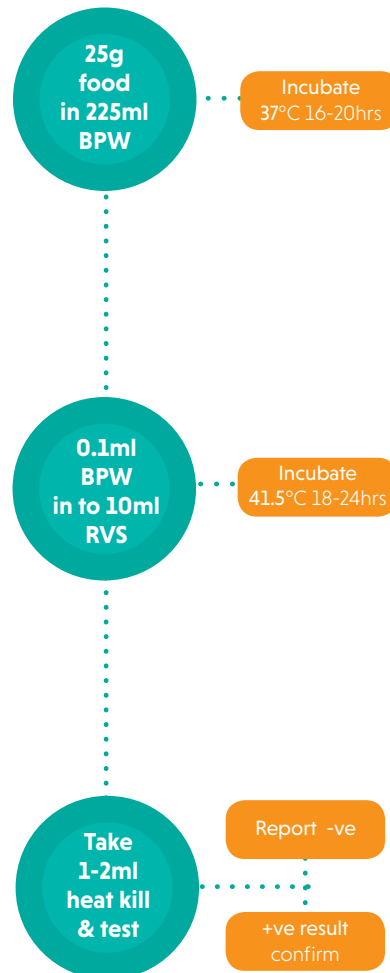
Certificate Number 11117
ISO 9001

Method Comparison Chart Compared with ISO 6579

ISO 6579 Timescale



Solus Salmonella™ Timescale



Solus Scientific Solutions Ltd

9 Mansfield Networkcentre
Millennium Business Park, Concorde Way,
Mansfield, Nottinghamshire NG19 7JZ

Tel +44 (0)1623 429701

Fax +44 (0)1623 620977

Email enquiries@solusscientific.com

Web www.solusscientific.com